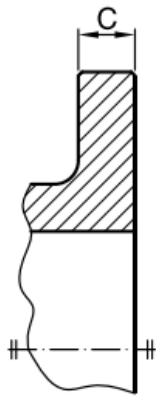
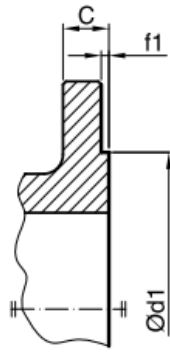


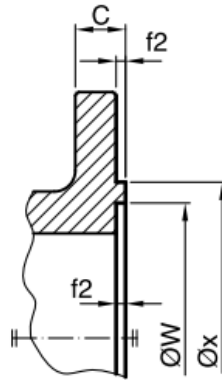
Flange facing dimensions according to EN 1092-1



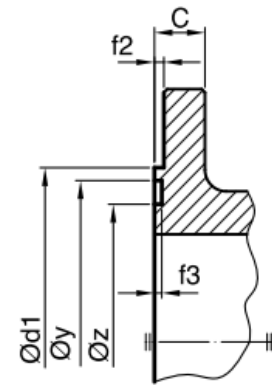
Drawing I.1.1 - Type A
Flat face



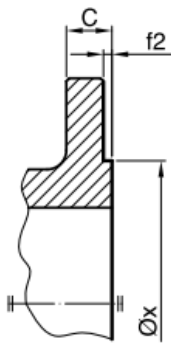
Drawing I.1.2 - Type B
Raised face (B1 i B2)



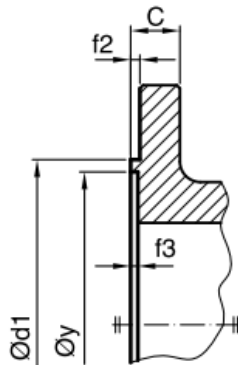
Drawing I.1.3 - Type C
Tongue face



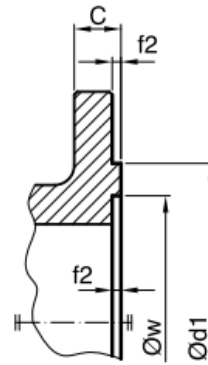
Drawing I.1.4 - Type D
Groove face



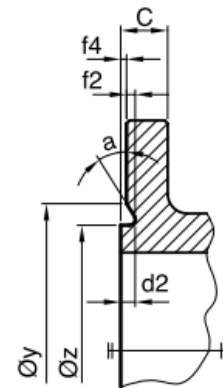
Drawing I.1.5 - Type E
Spigot



Drawing I.1.6 - Type F
Recess



Drawing I.1.7 - Type G
O Ring recess



Drawing I.1.8 - Type H
O Ring groove

Dimensions (mm)

Table I.1.4

DN	PN 25	PN 40	PN 63	PN 100 (160)	f_1	f_2	f_3	f_4	w	x	y	z	a	d_2				
	d_1				\varnothing (mm)													
10	Use PN 100 dimensions				40	2	4	3	2	24	34	35	23	41°	5			
15					45					29	39	40	28					
20					58					36	50	51	35					
25					68					43	57	58	42					
32					78					51	65	66	50					
40					88					61	75	76	60					
50					102					73	87	88	72					
65					122					95	109	110	94					
80					138					106	120	121	105					
100					162					162	162	162	4,5			3,5	3	129
125	188	188	188	188	155	175	176	154										
150	218	218	218	218	183	203	204	182										
200	278	285	285	285	239	259	260	238										
250	335	345	345	345	292	312	313	291										
300	395	410	410	410	343	363	364	342										
350	450	465	465	465	5	4	3	395	421	422	394	27°		7				

*For PN 160 flanges form can be only B2, C and D